

Strategic Workshop

Workshop Venue, Travel, and Accommodation

Host organization

University of Luxembourg (UL) is founded in 2003 as part of an ambitious national strategy to transition to a knowledge-based economy. It is a multilingual, international, interdisciplinary, research-oriented university. UL ranks 25th in the 2022 Times Higher Education Young University Ranking, 3rd world-wide in the International Outlook category. UL now has 2200 employees, 900 PhD candidates under employment contract, 280 assist./assoc. and full professors, and 6800 students from over 130 different nations. More details can be found at [//www.en.uni.lu/research/focus_areas](http://www.en.uni.lu/research/focus_areas).

Interdisciplinary Centre for Security, Reliability and Trust (SnT), part of UL conducts internationally competitive research in information and communication technology, ICT, with high relevance creating socio-economic impact. In addition to long-term, high-risk research, SnT engages in demand driven collaborative projects with industry and the public sector. SnT has undergone rapid development since its launch in 2009; recruiting top scientists, launching over 70 EU and ESA projects, creating a technology transfer office (TTO), protecting and licensing IP, launching four spin-offs, and creating a dynamic interdisciplinary research environment with some 480 people. More details can be found at [//www.fr.uni.lu/snt](http://www.fr.uni.lu/snt).

LEGATO team ([//legato-team.eu](http://legato-team.eu)), is part of the UL, led by Prof. Stephane Bordas, aims at building intuitive and interactive platforms for computational mechanics problems which allow the users to interact with their models and hence gain insights into unconventional and counter-intuitive phenomena. The research approach of LEGATO team is multi-disciplinary and includes the applications related to the medical simulations, wind energy harvesting, error estimation, machine learning, model reduction methods for non-linear problems, data assimilation, etc.

Dr. Anina Glumac, a member of LEGATO team and Vice-leader of WG1 of MODENERLANDS Cost Action, is the local organizer of this Strategic Workshop. Thus, for more details about the organization please use email address: anina.glumac@uni.lu.



Belval Campus of University of Luxembourg



Workshop venue

The Workshop is taking place at **Belval campus of University of Luxembourg** in Esch-sur-Alzette. Esch-sur-Alzette is the second largest city in Luxembourg. In 2022, Esch-sur-Alzette was rewarded with the title of European Capital of Culture.

Location: Maison des Sciences Humaines (MSH)

Address: 11 Porte des Sciences, 4366 Esch-sur-Alzette

Room: Black Box.

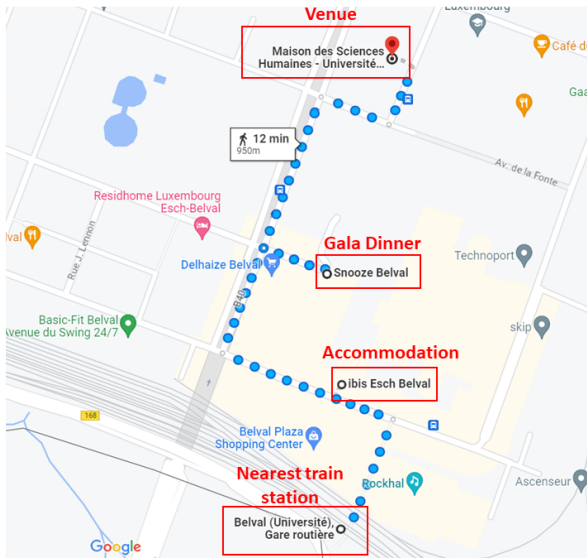


Masoin des Sciences Humaines

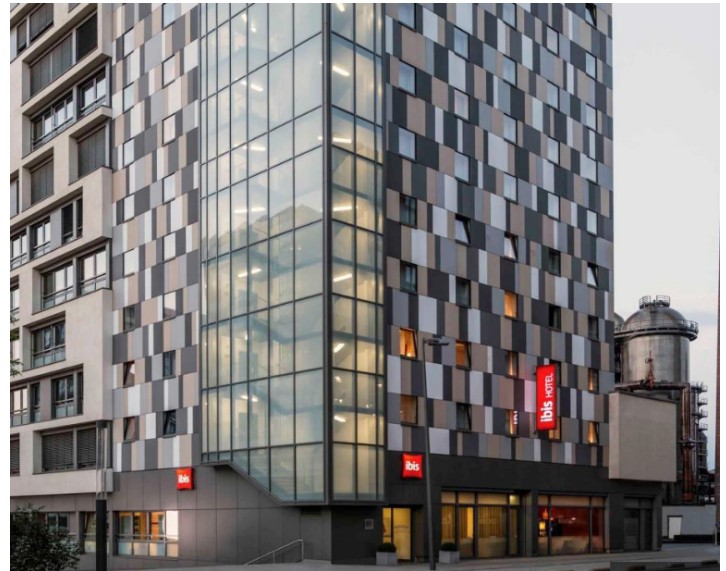
Travel

The **Luxembourg international airport** is the closest airport to the University of Luxembourg, located near Luxembourg city. The Campus Belval is reachable by public transportation from the Airport. Note that public transportation in Luxembourg is free (bus, train, tram). Bus 29 runs every 15 min during the day, and connects the airport (**station: Luxembourg Airport**) with the Luxembourg's main train station (**station: Luxembourg, Gare Centrale**) and it takes approximately 22min. From the main train station in Luxembourg a train departs every 15 minutes, in the direction of Rodange or Petange, directly to the Belval's train station (**station: Belval Université**) and it reaches it in 35 min. From Belval Université, by walk, the workshop venue is only 800 m or less than 10 min away, please see the map. Please note that public transportation is scarce in early mornings, as well as late evenings. More information, such as timetable and routes, can be found on [//www.mobiliteit.lu/en/](http://www.mobiliteit.lu/en/) or by downloading the app: [//apps.apple.com/us/app/mobiliteit-lu/id434829995](https://apps.apple.com/us/app/mobiliteit-lu/id434829995). Another option to reach Belval from the Luxembourg Airport is by taxi (for example: [//www.webtaxi.lu/en/welcome.html](http://www.webtaxi.lu/en/welcome.html), and the cost can be about 100EU). More details on how to reach Belval Campus can be found at [//bnaic2021.uni.lu/venue/](http://bnaic2021.uni.lu/venue/).

Other major international airports closer to Luxembourg are Paris Charles de Gaulle Airport CDG (330 km) and Frankfurt Airport FRA (250 km). You can take either connecting flights from these airports to Luxembourg or use public transport (trains, buses). More information can be found at [//www.bahn.com/en](http://www.bahn.com/en) or [//www.cfl.lu/en-gb/ticket/international](http://www.cfl.lu/en-gb/ticket/international).



Walking route from Belval train station to Workshop Venue, Including Conf. Dinner and Ibis Esch Belval Hotel location



Ibis Esch Belval hotel

Accommodation

Ibis Esch Belval hotel is positioned in front of the Belval train station and only 600 m from the venue or 7 minutes away by walking. The rooms are pre-booked for the participants of the Workshop. Participants wishing to use these pre-booked rooms should fill out the form attached to the COST invitation email and send it directly to the hotel **by 9 April**. Please note that the hotel also has a possibility to use parking in the nearby shopping mol (Belval Plaza).

Workshop's Dinner, Lunch and City Tour

Dinner

Location: Snooze Pub

Date & time: 15th of May at 8pm.

Snooze Pub serves all kinds of burgers and salads. More information can be found at <http://city.snooze.pub/brunch-in-belval>. It is only 550 m or 7 minutes to walk from the venue, please see the map.



Entrance to Snooze Pub, Belval

Lunch

Location: Foodlab

Date & Time: 15th and 16th of May, according to the Workshop's Timetable

Foodlab is the University of Luxembourg canteen, positioned across the entrance from the venue.

City Tour

Departure location: In front of the LCTO (Luxembourg City Tourism Office) 30 Pl. Guillaume II, 1648 Luxembourg, City Hall place.

Meeting time: 16th May at 5.00 pm

The City Promenade is the perfect way to get the most out of the stay in Luxembourg City. Accompanied by one of official guides, participants will discover the former fortress city's top attractions and hidden gems! This 2-hour walking tour will make participants discover, among many others, the prestigious grand ducal Palace, the Corniche also known as the "most beautiful balcony in Europe" as well as the Bock promontory, the cradle of Luxembourg City. The local organizes will also meet with interested participants in front of Belval Esch Hotel (the time will be announced) to accompany them to the departure location.



Luxembourg City

Note: Workshop dinner, lunch and city tour are optional for the participants. Registration form (inc. related prices and credit card payment option) will be soon sent to the participants to express their interest.